

# LOAD BREAK SWITCHES



*At the cutting edge of current control*

**CG** Crompton Greaves  
EVERYDAY SOLUTIONS

LB Series Load Break Switches comply with the latest specifications for modern low voltage devices.

Outstanding electrical characteristics of LB Switches with compact design, contribute to space saving installation and operational convenience.

Basic construction and design of the switch makes it compact, safe and highly reliable.

The switch uses polyamide glass filled material, having excellent track resistance (CTI) for Insulation to prevent flashover between phases in the most severe conditions.

The special contact design and configuration makes the switch highly reliable to withstand high short circuit currents.

Wide variety of ABS and Metal Boxes for switching near the application.

## FEATURES

- Double break contacts.
- Polycarbonate shroud for wired terminal protection is included.
- Excellent switching and high short circuit capacity.
- Compact and reliable.
- Easy installation.
- Different mounting options, i.e. front mounting, rear mounting and enclosure mounting.
- Provision to fix on DIN Rail for rear mounting Switches.
- Quick, simple and convenient, dia. 22.5 mm single hole mounting is offered for 16A/20A switches with padlocking option.
- Open terminals for easy access.
- Finger protection.
- Terminal screws with fixed clamp for easy wiring.
- Add-on main/neutral/auxiliary contacts can be mounted on both sides of the switch. Economical non-switching neutral can be mounted on either sides.
- 4th Pole addition is possible at site.
- Maintenance Handle offered with MB34/MB42 mounting for switching ON, when panel is open, for testing purpose.

## APPLICATIONS

- Isolator.
- Motor Start and Stop.
- Manual Motor controller as Motor Disconnect.
- Main Switch.
- Emergency ON-OFF.
- Control Switch.
- Changeover Switch.

## APPROVALS

- For Canada and US.



- For Europe



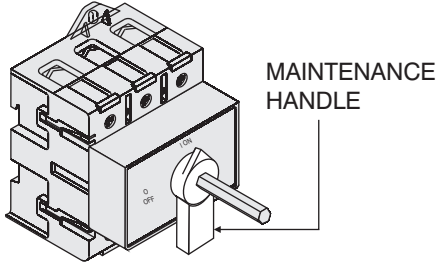
Please refer to us for updated status on the approvals and listings.

# REAR MOUNTING

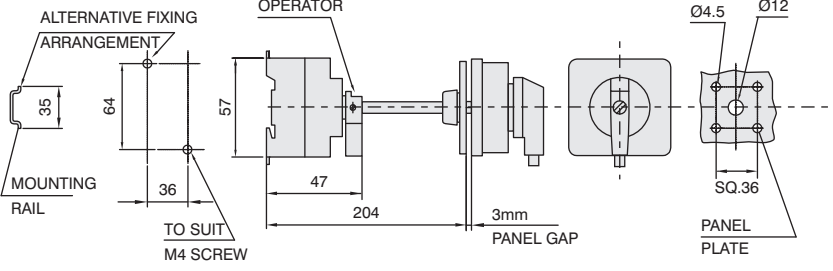
## MB34



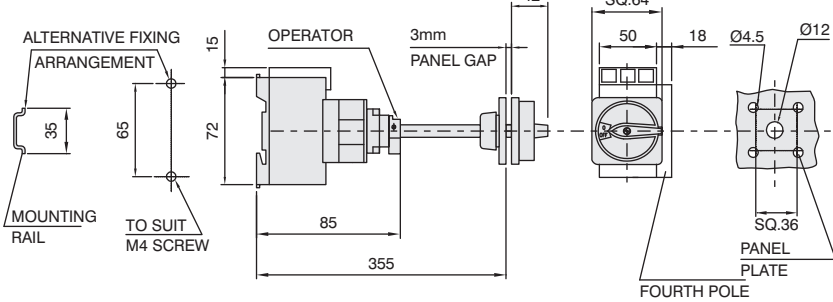
- 2 hole rear mounting or snap mounting on DIN EN50022 rail (35mm) and operable from the front (door) coupled with door mechanism.
- Door interlock (door openable only in OFF position).
- Degree of protection : Front IP65.
- Rigid metal shaft/switch assembly.
- Switch with round padlocking device to prevent the Switch from being made ON by unauthorised persons.
- Max. 3 padlocks as under.
  - 16A-20A: Max. 1 padlock
  - 25A-63A: Max. 2 padlocks
  - 80A-125A: Max. 3 padlocks
- Maintenance Handle offered for switching ON, when panel is open, for testing purpose.
- Adjustable mounting by cutting the metal shaft to appropriate length, to suit panel height.
- Specific Length of shaft can be offered on request.



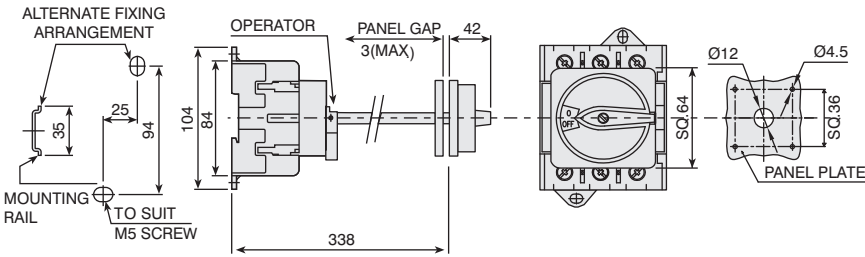
### 16A-20A



### 25A-63A



### 80A-125A



### Notes:

.....

.....

.....

.....

.....

.....

.....

.....

.....

.....

.....



## CHANGEOVER SWITCHES: KNOB/HANDLE AND MOUNTING OPTIONS

MOUNTING	LB225	LB232	LB240	LB263	LB4080	LB4100	LB4125
B13	PG, <b>BG</b>	PG, <b>BG</b>	PG, <b>BG</b>	PG, <b>BG</b>	-	-	-
MB34	<b>RD</b>	<b>RD</b>	<b>RD</b>	<b>RD</b>	<b>RD</b>	<b>RD</b>	<b>RD</b>
MB42	PG, <b>BG</b>	PG, <b>BG</b>	PG, <b>BG</b>	PG, <b>BG</b>	PG, <b>BG</b>	PG, <b>BG</b>	PG, <b>BG</b>
B21	<b>BG</b> , PG	<b>BG</b> , PG	<b>BG</b> , PG	<b>BG</b> , PG	PG, <b>BG</b>	<b>BG</b> , PG	<b>BG</b> , PG
SB31	<b>BG</b> , PG	<b>BG</b> , PG	<b>BG</b> , PG	<b>BG</b> , PG	-	-	-
SB31XL	-	-	-	-	<b>BG</b> , PG	<b>BG</b> , PG	<b>BG</b> , PG
B31L	<b>RD</b> , <b>BG</b>	<b>RD</b> , <b>BG</b>	<b>RD</b> , <b>BG</b> , PG	<b>RD</b> , <b>BG</b> , PG	-	-	-

The knobs/handles highlighted in red are standard, others indicates possible options.

## PRODUCT CODING

### LOAD BREAK AND CHANGEOVER SWITCHES

LB Load Break Switch	XXXX Switch Rating	XXXXXX Programme Code	XXXXXX Mounting Options	XX Knob Options	XX Colour
-------------------------------	--------------------------	--------------------------	----------------------------	--------------------	--------------

### EXAMPLE

LB Switches, 25A, 3P, 9 O'clock, 4 hole front mounting, yellow front plate, red tear drop knob

LB 225 31309 B13 TD YR

LB Switches, 63A, 3P, 9 O'clock, 4 hole front mounting, with metal shaft, yellow front plate, red round knob

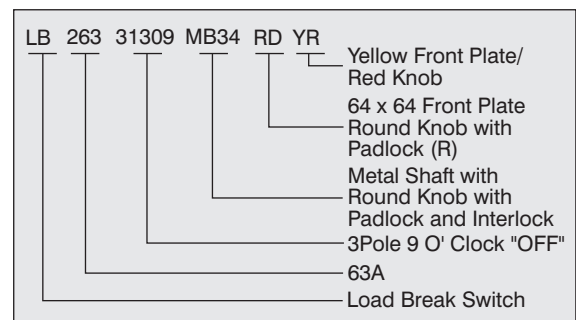
LB 263 31309 MB34 RD YR

LB Switches 40A, 3P, 12 O'clock off in B31SM enclosure, grey front plate, black round knob

LB 240 31300 B31SM RD GB

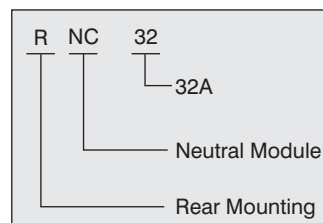
LB Changeover Switch, 63A, 3P, metal enclosure with interlock, yellow front plate, red ball grip handle

LB 263 31153 SB31 BG YR



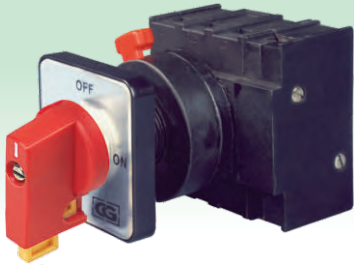
## ACCESSORIES

X	XX	XXX
F-Front Mounting	MC-Main Module	20 - 16A to 20A 32 - 25A to 32A
R-Rear Mounting	NC-Neutral Module	63 - 40A to 63A 80 - 80A 125 - 100A to 125A
	AC-Auxiliary Module	
	EC-Non Switchable Neutral	

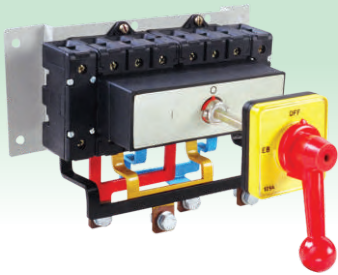




Switch with Roll Handle and Short Handle, both Padlockable



Switch for Single Hole Mounting with Padlockable Knob



Changeover Switch



### RANGE

- Rated upto 75HP for motor control and upto 125 Amps for switching.
- Optional dia 22.5mm single hole, panel, base, DIN rail or enclosure mounting.
- On Load Changeover Switches with mounting options.

### FEATURES

- Padlock and door interlocking facility.
- Double break contacts, with ADD-ON Blocks.
- IP 20, touch proof terminals.
- With shroud for protection.

### APPROVALS

- Conform to IEC, VDE, UL and CSA standards.
- Carry CE, UL and CSA marks as applicable.
- Factory ISO 9001 certified by KPMG, US.

