

# FUZ8TC

## 8 Channel Thermocouple Recorder

### FEATURES

- ❖ Miniature size
- ❖ Reusable
- ❖ Real-time operation
- ❖ Low cost
- ❖ Programmable start time
- ❖ N.I.S.T. traceable
- ❖ User-friendly

### APPLICATIONS

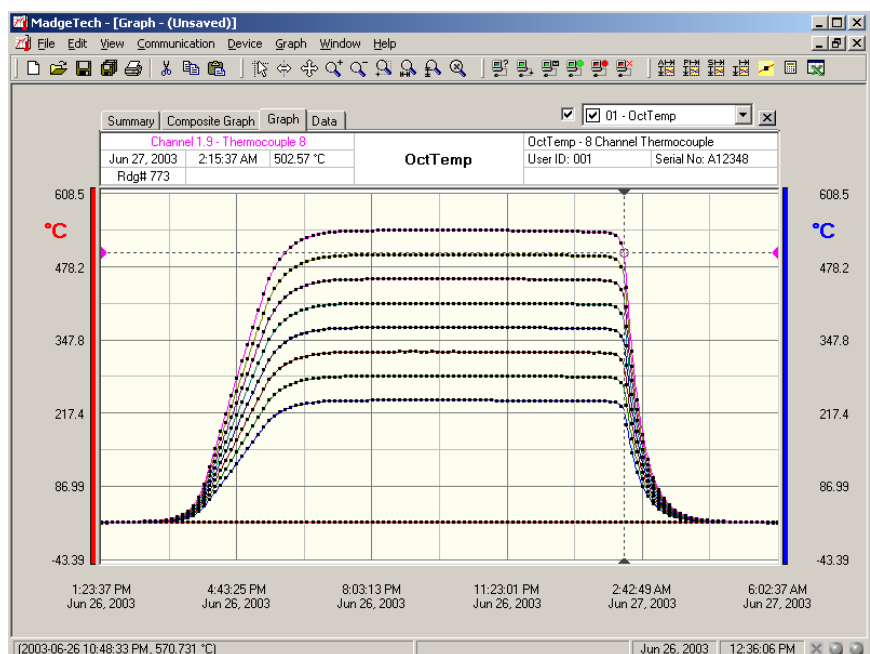
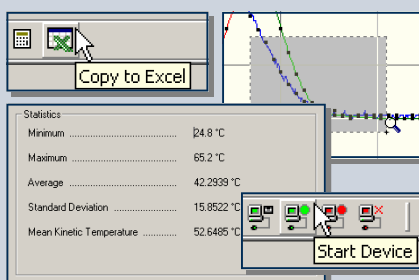
- ❖ Record temperature of perishable goods in transit
- ❖ Warehouse monitoring
- ❖ HVAC
- ❖ Medical/Pharmaceutical
- ❖ Museum monitoring
- ❖ Environmental studies
- ❖ Replace costly strip chart recorders
- ❖ Implement HACCP programs



The FUZ8TC is an eight channel, battery powered, stand alone thermocouple recorder. This is an all-in-one compact, portable, easy to use device that will measure and record up to 14,563 measurements per channel. The storage medium is non-volatile solid state memory, providing maximum data security even if the battery becomes discharged. The device can be started and stopped directly from your computer and its small size allows it to fit almost anywhere. The FUZ8TEMP makes data retrieval quick and easy. Simply plug it into an empty com port and our user-friendly software does the rest.

### SOFTWARE

FUZYPRO's Data Recorder Software is an easy to use Windows-based software package that allows the user to effortlessly collect, display and analyze data. A variety of powerful tools allow you to examine, export, and print professional looking data with just a click of the mouse.



### Internal Channel

**Temperature Range:** -40 °C to + 80 C

**Temperature Resolution:** 0.1 °C

**Calibrated Accuracy:** ±0.5 °C (0 to +50°C)

### 8 Remote Channels

#### Remote Channel

**Thermocouple Types:** J,K,T,E,R,S,B,N

**Thermocouple connection:** Female subminiature (SMP)

#### Cold Junction

**Compensation:** Automatic, based on internal channel

Thermocouple	Range (°C)	Resolution	Accuracy
J	-210 to +760	0.1 °C	±0.5 °C
K	-270 to +1370	0.1 °C	±0.5 °C
T	-270 to +400	0.1 °C	±0.5 °C
E	-270 to +980	0.1 °C	±0.5 °C
R	-50 to +1760	0.5 °C	±2.0 °C
S	-50 to +1760	0.5 °C	±2.0 °C
	+50 to +1820	0.5 °C	±2.0 °C
	-270 to +1300	0.1 °C	±0.5 °C

**Start Time:** Software programmable start time and date up to six months in advance

**Real Time Recording:** May be used with PC to monitor and record data in real time

**Memory:** 14,563 readings per channel

**Reading Interval:** 1 reading every 5 seconds to 1 every 12 hours

**Calibration:** Digital calibration through software

**Calibration Date:** Automatically recorded within device

**Power:** 9 Volt lithium or alkaline battery included

**\*User Replaceable Battery:** 1 year typical

**Data Format:** Date and time stamped °C, °F, °K, °R

**Time Accuracy:** ±1 minute/month (at 20 °C, RS232 port not in use)

**Computer Interface:** PC serial or RS232C COM (interface cable required); 2,400 baud

**Software:** Windows 95/98/ME/NT/2000/XP based software

**Operating Environment:** -40 °C to +80 °C, 0 to 95 %RH non-condensing

**Dimensions:** 3.5" x 4.4" x 1.5" (89mm x 111mm x 37mm)

**Weight:** 17 oz (480 g)

## OCTTEMP SOFTWARE FEATURES

**Multiple Graphs:** Simultaneously analyze data from several units or deployments; easily switch to a single data series

**Real-Time Recording:** Collect and display data in real-time while continuing to log

**Graphical Cursor:** One click displays readings by time, value, parameter or sample number

**Data Table:** Instantly access tabular view for detailed dates, times, values, and annotations

**Scaling Options:** Autoscale function fits data to the screen, or allows user to manually enter their own values

**Formatting Options:** Change colors, line styles, plotting options, show or hide channels in an instant

**Statistics:** Calculate averages, min, max, standard deviation, and mean kinetic temperature with the touch of a button

**Export Data:** Export data in a variety of common formats, or switch to Excel with a single click

**Calibration:** Fully digital calibration function automatically stores parameters in device

**Logger Configuration:** Easy set up and launch of data loggers with immediate or delayed start, preferred sample rate, and device ID

**Communications:** Automatically sets up communications port, or lets user set configuration

**Printing:** Automatically print graphical or tabular data

\*As part of our commitment to continuous product improvement, FUZYPRO reserves the right to change product specifications without notice.

### ORDERING INFORMATION

Model	Description
OCTTEMP	8 Channel Thermocouple Recorder
IFC101	Software, manual and 9-pin computer interface cable
N.I.S.T. Cert	N.I.S.T. Calibration Certificate

### ASK ABOUT OUR OTHER DATA RECORDERS

Temperature	pH
Humidity	Level
Pressure	Shock/Vibration
Bridge/Strain	Submersible
Current	Intrinsically Safe
Pulse/Event	RF Transmitters
Voltage	Multi-parameter