

## FEATURES

- ❖ Miniature size
- ❖ Reusable
- ❖ Real time operation
- ❖ Programmable engineering units
- ❖ Interfaces to tipping bucket rain gauges and contact closures
- ❖ User-friendly
- ❖ Low cost

## Applications

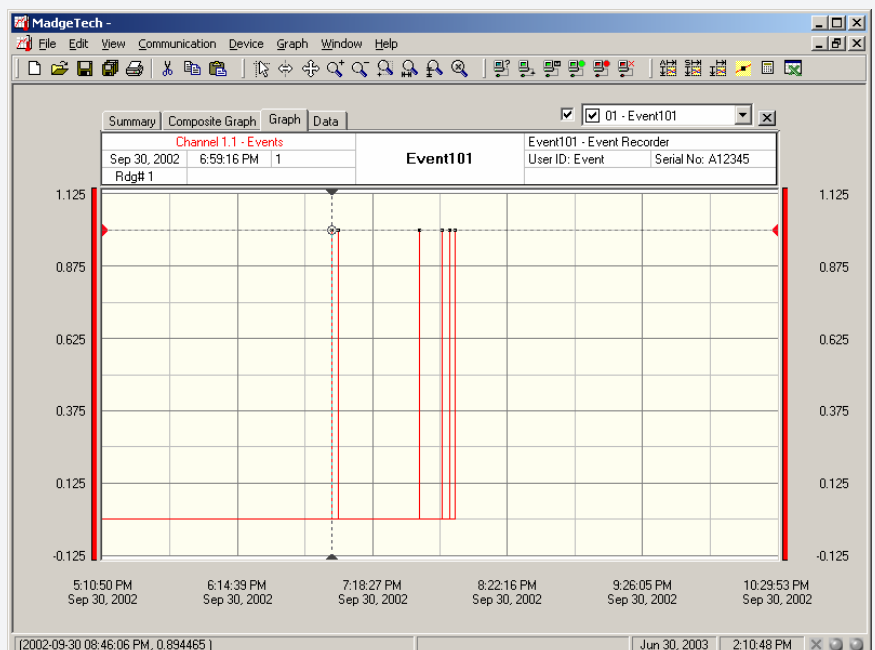
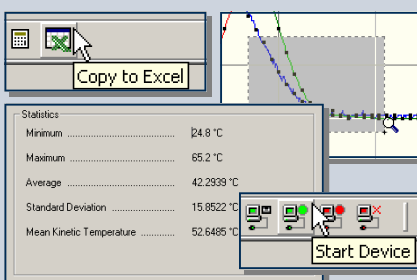
- ❖ Monitoring gas, water or electric meters
- ❖ Rainfall monitoring
- ❖ Contact closure monitoring
- ❖ Time studies
- ❖ Traffic studies
- ❖ Replace costly strip chart recorders



The EVENT101 is a miniature, low-cost, recording device which senses input transitions or contact closures from external sources such as transducers and/or event initiators and records the time that a particular event has occurred. The device can store up to 13,107 time stamped events. Once activated the EVENT101 senses and records transition or state changes at the input. The devices real-time clock ensures that all data is time and date stamped. The storage medium is non-volatile solid state memory, providing maximum data security even if the battery becomes discharged. The device can be started and stopped directly from your computer and its small size allows it to fit almost anywhere. The EVENT101 makes data retrieval quick and easy. Simply plug it into an empty COM port and our user-friendly software does the rest.

## SOFTWARE

FUZYPRO's Data Recorder Software is an easy to use Windows-based software package that allows the user to effortlessly collect, display and analyze data. A variety of powerful tools allow you to examine, export, and print professional looking data with just a click of the mouse.



Demo our software at [www.fuzzypro.com](http://www.fuzzypro.com)

## EVENT101 SPECIFICATIONS

<b>Input Connection:</b> Removable screw terminal	<b>Memory:</b> 13,107 readings
<b>Input Low:</b> < 0.4 V	<b>*Reading Interval:</b> 1 reading every second to 1 every 12 hours
<b>Input High:</b> > 2.7 V	<b>Start Time:</b> Software programmable start time and date, up to six months in advance
<b>Input Range:</b> 0 to 30 V	<b>User Replaceable Battery:</b> 1 year typical at 25 °C
<b>Input Impedance:</b> > 1KΩ	<b>Power:</b> 3.6V lithium battery, included
<b>Minimum Input Active (Low) Time:</b> 1 ms	<b>Data Format:</b> Date and time stamped events (true/false)
<b>Time Resolution:</b> 1 second (reading rate dependent)	<b>Time Accuracy:</b> ±1 minute/month (at 20 °C, RS232 cable not in use)
<b>Visual Indicator:</b> LED flashes at selected reading rate.	<b>Computer Interface:</b> PC serial or RS232C COM (Interface cable required); 2400 baud
<b>Engineering Units:</b> User may define units up to 10 characters in length. This value is stored within the device.	<b>Software:</b> Windows 95/98/ME/NT/2000/XP based software
<b>Scale Factor:</b> User may program any desired scaling factor from ±1.000E-31 to ±9.999E+31. The scaling factor is stored within the device.	<b>Operating Environment:</b> -40 °C to +80 °C, 5 to 95 %RH non-condensing
<b>Real Time Recording:</b> May be used with PC to monitor and record data in real time	<b>Dimensions:</b> 1.4" x 2.5" x 0.6" (36mm x 64mm x 16mm)
	<b>Weight:</b> 1 oz (30 g)

\*Device will record one event per user defined reading interval

## EVENT101 SOFTWARE FEATURES

<b>Multiple Graphs:</b> Simultaneously analyze data from several units or deployments; easily switch to a single data series	<b>Statistics:</b> Calculate averages, min, max, standard deviation, and mean kinetic temperature with the touch of a button
<b>Real-Time Recording:</b> Collect and display data in real-time while continuing to log	<b>Export Data:</b> Export data in a variety of common formats, or switch to Excel with a single click
<b>Graphical Cursor:</b> One click displays readings by time, value, parameter or sample number	<b>Calibration:</b> Fully digital calibration function automatically stores parameters in device
<b>Data Table:</b> Instantly access tabular view for detailed dates, times, values, and annotations	<b>Logger Configuration:</b> Easy set up and launch of data loggers with immediate or delayed start, preferred sample rate, and device ID
<b>Scaling Options:</b> Autoscale function fits data to the screen, or allows user to manually enter their own values	<b>Communications:</b> Automatically sets up communications port, or lets user set configuration
<b>Formatting Options:</b> Change colors, line styles, plotting options, show or hide channels in an instant	<b>Printing:</b> Automatically print graphical or tabular data

\*\*As part of our commitment to continuous product improvement, FUZYPRO Reserves the right to change product specifications without notice.

### ORDERING INFORMATION

Model	Description
EVENT101	Event Recorder
IFC101	Software, Manual & 9 pin Computer Interface Cable

### ASK ABOUT OUR OTHER DATA RECORDERS

<b>Temperature</b>	<b>Voltage</b>
<b>Humidity</b>	<b>Current</b>
<b>Pressure</b>	<b>Submersible</b>
<b>pH</b>	<b>Intrinsically Safe</b>
<b>Level</b>	<b>RF Transmitters</b>
<b>Shock/Vibration</b>	<b>Multi-parameter</b>
<b>Pulse/Event</b>	