

# FUZYPRO Data Loggers

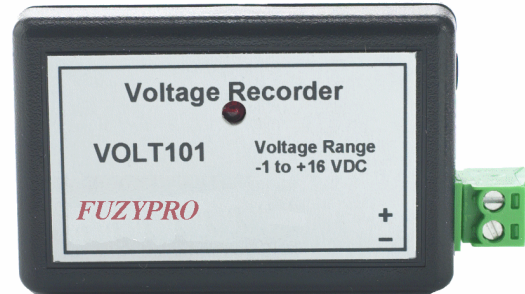
## FUZVOLT Voltage Recorder

### FEATURES

- ❖ Real-time operation
- ❖ Low cost
- ❖ Programmable start time
- ❖ Reusable
- ❖ Miniature size
- ❖ User-friendly
- ❖ Programmable engineering units

### APPLICATIONS

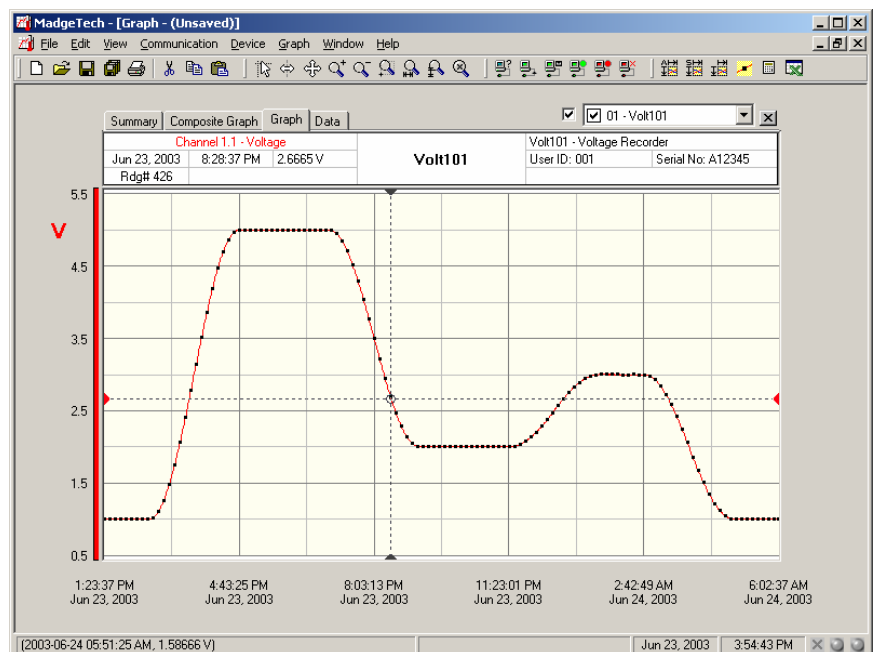
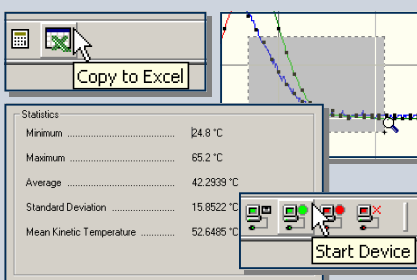
- ❖ Low level signal monitoring
- ❖ Medical/Pharmaceutical
- ❖ Battery studies
- ❖ Power supply monitoring
- ❖ Process plants
- ❖ Environmental studies
- ❖ Research and development
- ❖ Replace costly strip chart recorders



The FUZVOLT is a miniature, battery powered, stand alone voltage recorder. This is an all-in-one compact, portable, easy to use device that will measure and record up to 32,767 measurements. The storage medium is non-volatile solid state memory, providing maximum data security even if the battery becomes discharged. The device can be started and stopped directly from your computer and its small size allows it to fit almost anywhere. The VOLT101 makes data retrieval quick and easy. Simply plug it into an empty com port and our user-friendly software does the rest.

### SOFTWARE

FUZYPRO's Data Recorder Software is an easy to use Windows-based software package that allows the user to effortlessly collect, display and analyze data. A variety of powerful tools allow you to examine, export, and print professional looking data with just a click of the mouse.





**Input Connection:** Removable screw terminal

<b>Model:</b>	<b>2.5V</b>	<b>15V</b>	<b>30V</b>
<b>Voltage Range:</b>	-0.25 to +2.75	-1.0 to +16.0	-2.0 to +32.0
<b>Voltage Resolution:</b>	0.1 mV	0.5 mV	1.0 mV
<b>Calibrated Accuracy:</b>	±0.01 (%FSR)	±0.10 (%FSR)	±0.10 (%FSR)
<b>Input Impedance:</b>	>1 kΩ*	>10 kΩ	>10 kΩ
<b>Overload Protection:</b>	±5 V	±30 V	±48 V

**Analog Conversion Time:** 133 ms

**Frequency Rejection:** 60 Hz

**Temperature Coefficient:** < 25 ppm/°C; <10ppm/°C typical

**Specified Accuracy Range:** Nominal range @ 25 °C

**Engineering Units:** User may define units up to 10 characters in length. This value is stored within the device.

**Scale Factor:** User may program any desired scaling factor from ±1.000E-31 to ±9.999E+31. The scaling factor is stored within the device.

**Start Time:** Software programmable start time and date. Up to six months in advance

**Memory:** 32,767 readings

**Reading Interval:** 1 reading every second to 1 every 12 hours

**Real Time Recording:** May be used with PC to monitor and record data in real time

**Calibration:** Digital calibration through software

**Calibration Date:** Automatically recorded within device

**Power:** 3.6V lithium battery included

**User Replaceable Battery:** 1 year typical

**Data Format:** Date and time stamped V, mV, µV, engineering units specified through software

**Time Accuracy:** ±1 minute/month (at 20 °C, RS232 cable not in use)

**Computer Interface:** PC serial or RS232C COM (Interface cable required); 2,400 baud

**Software:** Windows 95/98/ME/NT/2000/XP based software

**Operating Environment:** -40 °C to +80 °C, 0 to 95 %RH non-condensing

**Dimensions:** 0.6" x 1.4" x 2.5" (16 mm x 35 mm x 64 mm)

**Weight:** 1 oz (30 g)

\* Input impedance is greater than 1 MΩ during acquisition for the VOLT101-2.5

## VOLT101 SOFTWARE FEATURES

**Multiple Graphs:** Simultaneously analyze data from several units or deployments; easily switch to a single data series

**Real-Time Recording:** Collect and display data in real-time while continuing to log

**Graphical Cursor:** One click displays readings by time, value, parameter or sample number

**Data Table:** Instantly access tabular view for detailed dates, times, values, and annotations

**Scaling Options:** Autoscale function fits data to the screen, or allows user to manually enter their own values

**Formatting Options:** Change colors, line styles, plotting options, show or hide channels in an instant

**Statistics:** Calculate averages, min, max, standard deviation, and mean kinetic temperature with the touch of a button

**Export Data:** Export data in a variety of common formats, or switch to Excel with a single click

**Calibration:** Fully digital calibration function automatically stores parameters in device

**Logger Configuration:** Easy set up and launch of data loggers with immediate or delayed start, preferred sample rate, and device ID

**Communications:** Automatically sets up communications port, or lets user set configuration

**Printing:** Automatically print graphical or tabular data

\*\*As part of our commitment to continuous product improvement, FUZYPRO reserves the right to change product specifications without notice

### ORDERING INFORMATION

Model	Description
VOLT101-2.5	2.5V Voltage Recorder
VOLT101-15	15V Voltage Recorder
VOLT101-30	30V Voltage Recorder
IFC101	Software, manual and 9-pin computer interface cable

### ASK ABOUT OUR OTHER DATA RECORDERS

Temperature	pH
Humidity	Level
Pressure	Shock/Vibration
Bridge/Strain	Submersible
Current	Intrinsically Safe
Pulse/Event	RF Transmitters
Voltage	Multi-parameter