

FEATURES

- ❖ Real-time operation
- ❖ Low cost
- ❖ Programmable start time
- ❖ Reusable
- ❖ Miniature size
- ❖ User-friendly
- ❖ Programmable engineering units

APPLICATIONS

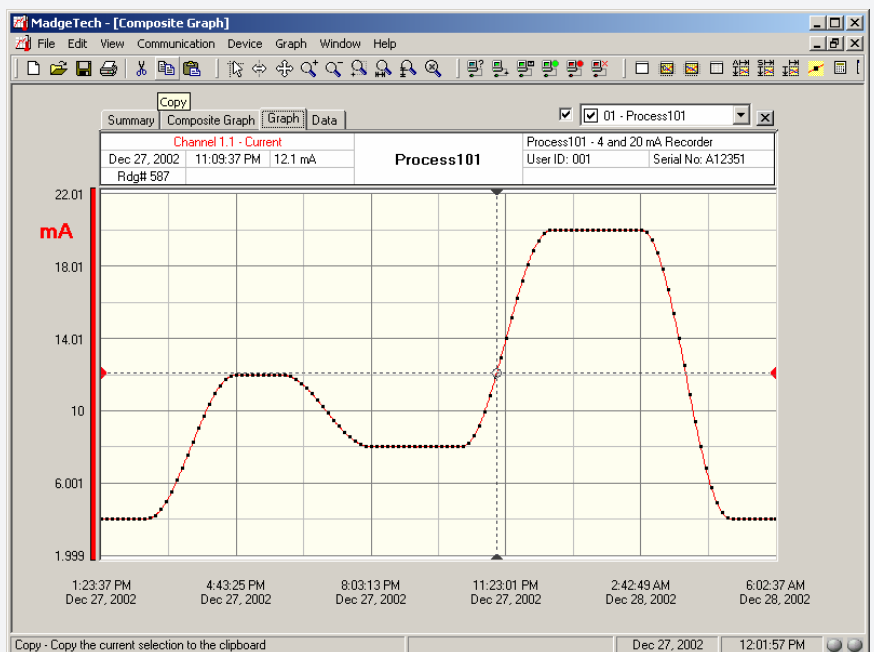
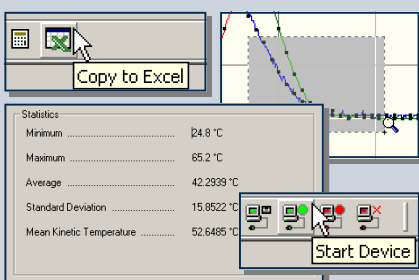
- ❖ 4 to 20 mA recording
- ❖ pH recording
- ❖ Low level signal monitoring
- ❖ Photovoltaic studies
- ❖ Battery studies
- ❖ Biological sensor monitoring
- ❖ Medical/Pharmaceutical
- ❖ Environmental studies
- ❖ Research and development
- ❖ Replace costly strip chart recorders



The FZmA is a miniature, battery powered, stand alone current recorder. This is an all-in-one compact, portable, easy to use device that will measure and record up to 32,767 measurements. The storage medium is non-volatile solid state memory, providing maximum data security even if the battery becomes discharged. The device can be started and stopped directly from your computer and its small size allows it to fit almost anywhere. The PROCESS101 makes data retrieval quick and easy. Simply plug it into an empty com port and our user-friendly software does the rest.

SOFTWARE

FUZYPRO's Data Recorder Software is an easy to use Windows-based software package that allows the user to effortlessly collect, display and analyze data. A variety of powerful tools allow you to examine, export, and print professional looking data with just a click of the mouse.



Input Connection: Removable screw terminal

Measurement Range: -20 to +120 mA

Current Resolution: 10 μ A

Calibrated Accuracy: ± 0.10 %FSR

Input Impedance: 10 Ω

Analog Conversion Time: 133 ms nominal

Frequency Rejection: 60 Hz

Temperature Coefficient: < 100 ppm/ $^{\circ}$ C; < 50 ppm/ $^{\circ}$ C typical

Overload Protection: ± 125 mA for 10 seconds

Specified Accuracy Range: Nominal range @ 25 $^{\circ}$ C

Engineering Units: User may define units up to 10 characters in length. This value is stored within the device.

Scale Factor: User may program any desired scaling factor from $\pm 1.000E-31$ to $\pm 9.999E+31$. The scaling factor is stored within the device.

Start Time: Software programmable start time and date. Up to six months in advance

Memory: 32,767 readings

Reading Interval: 1 reading every second to 1 every 12 hours

Real Time Recording: May be used with PC to monitor and record data in real time

Calibration: Digital calibration through software

Calibration Date: Automatically recorded within device

Power: 3.6V lithium battery included

User Replaceable Battery: 1 year typical at 25 $^{\circ}$ C

Data Format: Date and time stamped A, mA, μ A, engineering units specified through software

Time Accuracy: ± 1 minute/month (at 20 $^{\circ}$ C, RS232 cable not in use)

Computer Interface: PC serial or RS232C COM (Interface cable required); 2,400 baud

Software: Windows 95/98/ME/NT/2000/XP based software

Operating Environment: -40 $^{\circ}$ C to +80 $^{\circ}$ C, 0 to 95 %RH non-condensing

Dimensions: 0.6" x 1.4" x 2.5" (16 mm x 35 mm x 64 mm)

Weight: 1 oz (30 g)

PROCESS101 SOFTWARE FEATURES

Multiple Graphs:	Simultaneously analyze data from several units or deployments; easily switch to a single data series	Statistics:	Calculate averages, min, max, standard deviation, and mean kinetic temperature with the touch of a button
Real-Time Recording:	Collect and display data in real-time while continuing to log	Export Data:	Export data in a variety of common formats, or switch to Excel with a single click
Graphical Cursor:	One click displays readings by time, value, parameter or sample number	Calibration:	Fully digital calibration function automatically stores parameters in device
Data Table:	Instantly access tabular view for detailed dates, times, values, and annotations	Logger Configuration:	Easy set up and launch of data loggers with immediate or delayed start, preferred sample rate, and device ID
Scaling Options:	Autoscale function fits data to the screen, or allows user to manually enter their own values	Communications:	Automatically sets up communications port, or lets user set configuration
Formatting Options:	Change colors, line styles, plotting options, show or hide channels in an instant	Printing:	Automatically print graphical or tabular data

*As part of our commitment to continuous product improvement, FUZYPRO reserves the right to change product specifications without notice

ORDERING INFORMATION

Model	Description
PROCESS101	Current Recorder
IFC101	Software, manual and 9-pin computer interface cable

ASK ABOUT OUR OTHER DATA RECORDERS

Temperature	pH
Humidity	Level
Pressure	Shock/Vibration
Bridge/Strain	Submersible
Current	Intrinsically Safe
Pulse/Event	RF Transmitters
Voltage	Multi-parameter