

FUZYPRO Data Loggers

LEVEL2000 Vented Water Level and Temperature Recorder

FEATURES

- ❖ Low cost
- ❖ Miniature size
- ❖ User-friendly
- ❖ Reusable
- ❖ Atmospheric pressure compensated
- ❖ Submersible to 103 ft
- ❖ Programmable start time



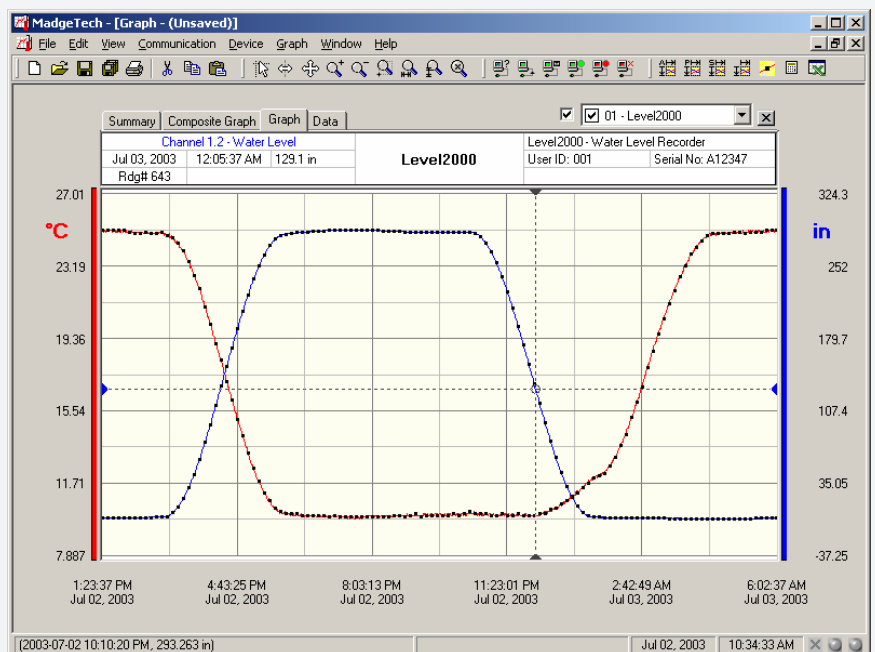
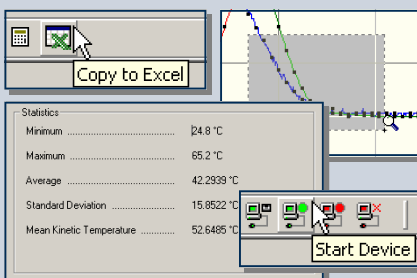
APPLICATIONS

- ❖ Water level monitoring
- ❖ Environmental studies
- ❖ Waste water treatment
- ❖ Flood analysis
- ❖ Groundwater monitoring
- ❖ Irrigation canals
- ❖ Lake and wetland studies
- ❖ Stormwater studies
- ❖ Landfill/hazardous site analysis

The LEVEL2000 is a battery powered, stand alone, vented submersible water level and temperature recorder. This is an all-in-one compact, portable, easy to use device that will measure and record up to 16,383 measurements per channel. The storage medium is non-volatile solid state memory, providing maximum data security even if the battery becomes discharged. The device can be started and stopped directly from your computer and its small size allows it to fit almost anywhere. The LEVEL2000 makes data retrieval quick and easy. Simply plug it into an empty com port and our user-friendly software does the rest.

SOFTWARE

FUZYPRO'S Data Recorder Software is an easy to use Windows-based software package that allows the user to effortlessly collect, display and analyze data. A variety of powerful tools allow you to examine, export, and print professional looking data with just a click of the mouse.



Temperature Sensor: Semiconductor
Range: -40 °C to +80 °C
Resolution: 0.1 °C
Calibrated Accuracy: ±0.5 °C(0 to +50°C)

Pressure Sensor: Semiconductor strain gauge
Media Compatibility: Must be compatible with 303 stainless steel
Nominal Range: 0 to 34 feet
Measurement Range: -34 to 69 feet
Resolution: 0.02 inches
Calibrated Accuracy: Nominal range ±0.3% max @ 25 °C
Response Time: 90% change in 1 ms
Repeatability: ±0.5% FSR; ±0.2% typical
Proof Pressure: 75 PSIG
Memory: 16,383 readings per channel
Real Time Recording: May be used with PC to monitor and record data in real time

Reading Interval: 1 reading every 2 seconds to 1 every 12 hours
Start Time: Software programmable start time and date, up to six months in advance
Calibration: Digital calibration through software
Calibration Date: Automatically recorded within device
Power: 3.6V lithium battery included
User Replaceable Battery: 1 year typical at 25 °C
Data Format: Date and time stamped °C, °F, °K, °R; PSI, inches, feet, millimeters, centimeters, meters (of water column)
Time Accuracy: ±1 minute/month (RS232 cable not in use)
Computer Interface: PC serial or RS232C COM (interface cable required); 2,400 baud
Software: Windows 95/98/ME/NT/2000/XP based software
Operating Environment: -40 °C to +80 °C, 0 to 100 %RH
Dimensions: 1.25" dia x 7.5" L (32mm x 191mm)
Weight: 3 lb (1.4 kg)

*Other ranges are available by special arrangement

LEVEL2000 SOFTWARE FEATURES

Multiple Graphs: Simultaneously analyze data from several units or deployments; easily switch to a single data series	Statistics: Calculate averages, min, max, standard deviation, and mean kinetic temperature with the touch of a button
Real-Time Recording: Collect and display data in real-time while continuing to log	Export Data: Export data in a variety of common formats, or switch to Excel with a single click
Graphical Cursor: One click displays readings by time, value, parameter or sample number	Calibration: Fully digital calibration function automatically stores parameters in device
Data Table: Instantly access tabular view for detailed dates, times, values, and annotations	Logger Configuration: Easy set up and launch of data loggers with immediate or delayed start, preferred sample rate, and device ID
Scaling Options: Autoscale function fits data to the screen, or allows user to manually enter their own values	Communications: Automatically sets up communications port, or lets user set configuration
Formatting Options: Change colors, line styles, plotting options, show or hide channels in an instant	Printing: Automatically print graphical or tabular data

**As part of our commitment to continuous product improvement, FUZYPRO reserves the right to change product specifications without notice

ORDERING INFORMATION

Model	Description
LEVEL2000	Vented Water Level and Temperature Recorder
IFC101	Software, manual and 9-pin computer interface cable
N.I.S.T. Cert	N.I.S.T. Calibration Certificate

ASK ABOUT OUR OTHER DATA RECORDERS

Temperature	pH
Humidity	Level
Pressure	Shock/Vibration
Bridge/Strain	Submersible
Current	Intrinsically Safe
Pulse/Event	RF Transmitters
Voltage	Multi-parameter