

FEATURES

- ❖ Rugged
- ❖ Reusable
- ❖ Submersible
- ❖ Programmable start time
- ❖ Real-time operation
- ❖ User-friendly
- ❖ Low cost

APPLICATIONS

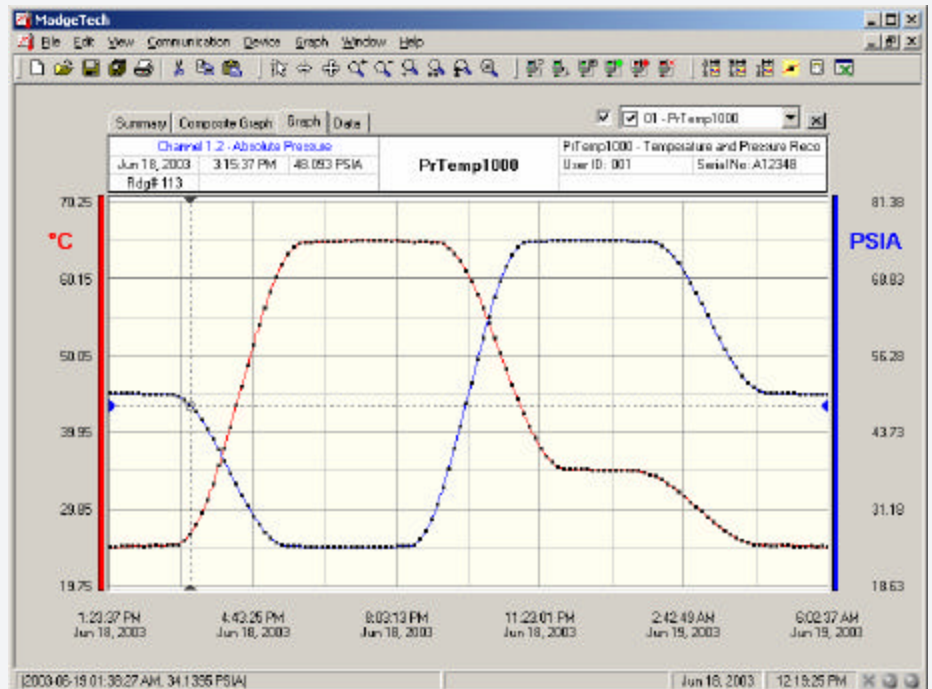
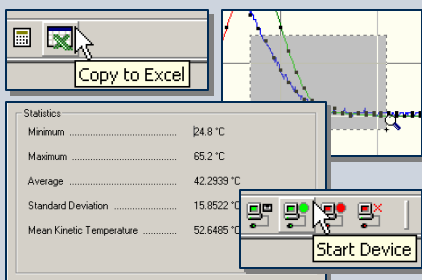
- ❖ Pneumatics
- ❖ Process control systems
- ❖ Gas compressors
- ❖ Natural gas production
- ❖ Lubrication systems
- ❖ Chemical processing
- ❖ Pulp and paper processing
- ❖ Medical instrumentation
- ❖ Environmental studies
- ❖ Waste water treatment
- ❖ HVAC
- ❖ Refridgeration
- ❖ Replace costly strip chart recorders



The PRTEMP1000 is a battery powered, stand-alone pressure and temperature data logger. This all-in-one compact, portable, easy to use device measures and records up to 16,383 pressure and 16,383 temperature measurements. The PRTEMP1000 accommodates numerous adaptors for various pressure ranges and pipe fittings. Its real time clock ensures that all data is time and date stamped. The storage medium is non-volatile solid state memory, providing maximum data security even if the battery becomes discharged. The device can be started and stopped directly from your computer and its small size allows it to fit almost anywhere. The PRTEMP1000 makes data retrieval quick and easy. Simply plug it into an empty com port and our user-friendly software does the rest.

SOFTWARE

Fuzypro's Data Recorder Software is an easy to use Windows-based software package that allows the user to effortlessly collect, display and analyze data. A variety of powerful tools allow you to examine, export, and print professional looking data with just a click of the mouse.



Temperature Range: -40 °C to +125 °C

Temperature Sensor: Semiconductor

Reading Interval: 1 reading every 2 seconds to 1 every 12 hours

Memory: 16,383 readings per channel

Extended Temperature Range: 80 °C to 125 °C; 15 minutes

Temperature Resolution: 0.1 °C

Calibrated Accuracy: ±0.5 °C

Calibration: Digital calibration through software

Calibration Date: Automatically recorded within device

Power: 3.6V lithium battery included

User Replaceable Battery: 1 year typical

Data Format: Date and time stamped °C, °F, °K, °R ; PSIA(g), inches, feet, mmHg, bar, Torr, kPa,

Time Accuracy: ±1 minute/month (at 20°C, RS232 port not in use)

Computer Interface: PC serial or RS232C COM (Interface cable required); 2,400 baud

Software: Windows 95/98/ME/NT/2000/XP based software

Operating Environment: -40 °C to +125 °C, 0 to 99% RH

Dimensions: 1.25" x 6.3" (32 mm x 165 mm)

Weight: 10 oz (285 g)

Pressure Sensor: Semiconductor strain gauge

Pressure Range: 0 to 30 PSIA, 100 psia, 300 psia, 500 psia

Pressure Resolution: .002 psia/g, .005psia/g, .02 psia/g, .05 psia/g

Calibrated Accuracy: 0.2 % FSR, .25 % @ 25 °C typical

Pressure Response Time: 0.1 ms (10% to 90% FSR)

Repeatability: ± 0.5 % FSR; ± 0.2 % typical

Adaptor: 1/4" male NPT or fully submersible

Start Time: Software programmable start time and date. Up to six months in advance

Real Time Recording: May be used with PC to monitor and record data in real time

PRTEMP1000 SOFTWARE FEATURES

Multiple Graphs: Simultaneously analyze data from several units or deployments; easily switch to a single data series

Real-Time Recording: Collect and display data in real-time while continuing to log

Graphical Cursor: One click displays readings by time, value, parameter or sample number

Data Table: Instantly access tabular view for detailed dates, times, values, and annotations

Scaling Options: Autoscale function fits data to the screen, or allows user to manually enter their own values

Formatting Options: Change colors, line styles, plotting options, show or hide channels in an instant

Statistics: Calculate averages, min, max, standard deviation, and mean kinetic temperature with the touch of a button

Export Data: Export data in a variety of common formats, or switch to Excel with a single click

Calibration: Fully digital calibration function automatically stores parameters in device

Logger Configuration: Easy set up and launch of data loggers with immediate or delayed start, preferred sample rate, and device ID

Communications: Automatically sets up communications port, or lets user set configuration

Printing: Automatically print graphical or tabular data

ORDERING INFORMATION

Model	Description
PRTEMP1000	Pressure & Temperature Recorder
IFC101	Software, manual and 9-pin computer interface cable
N.I.S.T. Cert	N.I.S.T. Calibration Certificate

ASK ABOUT OUR OTHER DATA RECORDERS

Temperature	Voltage
Humidity	Current
Pressure	Submersible
pH	Intrinsically Safe
Level	RF Transmitters
Shock/Vibration	Multi-parameter
Pulse/Event	